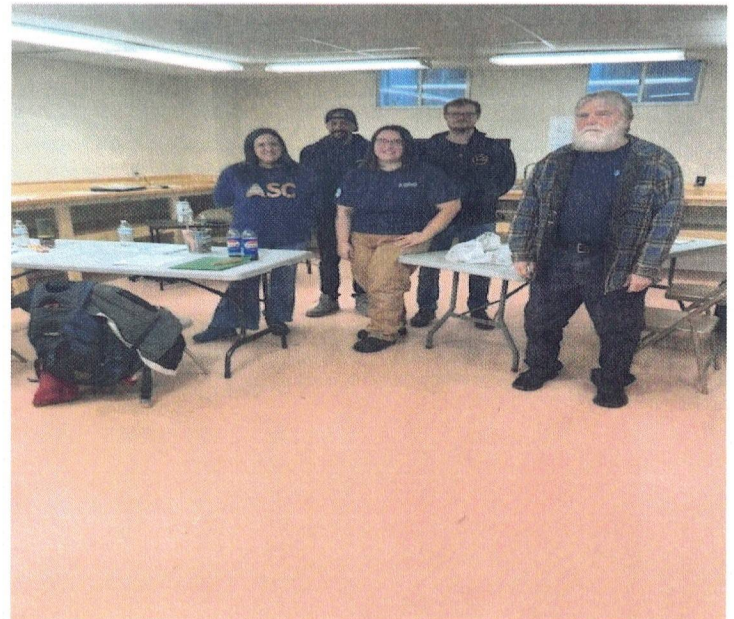




October/November, 2024



Short-Term October Lease (Because We Could Accommodate) ReSOURCE VT -- Construction 101



REMINDERS . . .

OVERNIGHT PARKING FOR NON-BUSINESS VEHICLES . . .

Both entries of the large Holiday Drive parking are posted. Please notify the Office in advance of any staff/client/known visitor vehicles that will be left on the premises overnight. We need the make, color, license plate number and duration of stay.

DUMPSTERS:

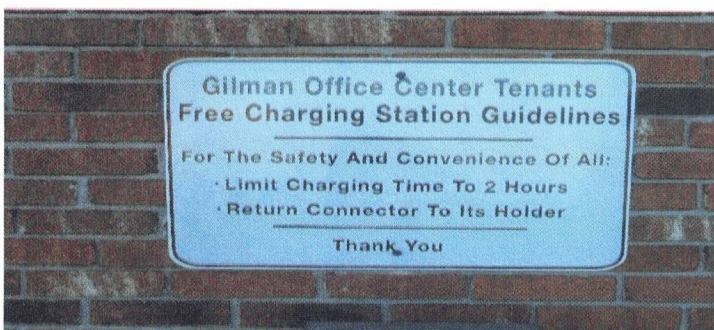
Tenant business trash only; plz. flatten all cardboard.

DOG OUTPUT:

Deposit into the Trash dumpsters (per Casella).

EV CHARGING STATION:

Please adhere to the sign requesting users be considerate and not leave vehicles unattended for lengthy usage; others may want access.



ReSOURCE VT travels to different locations presenting educational programs to individuals who are motivated and ready to work hard to start their next step in the trades. The 1 month course offers those who may have barriers to employment the opportunity of a hands-on experience working with hand-held & motorized construction tools, exposure to & safety of other aspects of construction (electrical/HVAC/plumbing/etc) . Through established Employer Partnerships, some trainees are given the chance of job placement. This class was able to work with COVER, putting learned skills to actual use.

THANKS to SW Cole for keeping the lights on in the Garage and to neighbor Outdoor Products/ Kathy for sharing WIFI access for this short visit.

GILMAN OFFICE CENTER

The Holiday Drive Neighborhood

- BLDG 1, Hanover Consumer Coop Admin Depts.
- BLDG 2, Ste 1, USDA-APHIS
- Ste 2, Kimberley Hartell
- Ste 3, 5, Lincoln Street, Inc.
- Ste 4, AVAILABLE 11/1/24 (354SF)
- Ste 6, AVAILABLE (205SF)
- Ste 7, Lincoln Street, Inc.
- Ste 8, Reliable Respiratory
- Ste 9, Hope for Meaningful Chance Counseling
- Ste 20, Angelina's Rose
- Ste 21, SEVCA
- Ste 23, Rowan Counseling VT
- Ste 24, White River Health & Education
- Ste 25, Coaching Your Dreams
- Ste 27, AVAILABLE (990SF)
- Ste 28, Start Change
- BLDG 3, Ste 1, Twin Pines Housing
- Ste 2, Health Care & Rehabilitation of SE VT
- Ste 3, Grandstand Apparel
- Ste 4, S.W.Cole Engineering
- Ste 5, Outdoor Products & Programs
- Ste 7, AVAILABLE (876SF)
- Ste 20, 24, 30, 23 Twin Pines Housing Trust
- Ste 21, Kim's Healing Hands Massage
- BLDG 4, Ste A, CT Valley Recovery Services
- Ste B, AVAILABLE (1,895SF)
- Ste 4, American Postal Workers Union
- Ste 5, Libbi Keith, Therapist
- Ste 22, Easter Seals
- Ste 24, Adaptive Driving Assoc.
- Ste 25, Sylvia Rogers Property Appraisals
- Ste 26, Riverbank Church
- Ste 27, Wild Roots Wellness
- Ste 28, Peak Outcome Partners/Dominion Lab
- Ste 30, All-Star White River, LLC
- BLDG 5, Ste 1, Bello Salon
- Ste 2&3, Riverbank Church
- BLDG 6, Ste 1 Eustis Cable
- Ste 4, Ideal Primary Care

The Farmvu Drive Neighborhood

- BLDG 7, CAFÉ – Hartford School District,
Culinary Arts Program / Fisher Auto
- BLDG 8, Fisher Auto Parts/Federated Auto
- BLDG 9, AVAILABLE TO SHOW – 4,377SF
- BLDG 10A, Keene Perspectives
- BLDG 10B, Keene Perspectives
- BLDG 12, Ste 1, USDA Service Center
- Ste 3, Friends of Veterans

ALL-STAR WHITE RIVER, LLC
LEASING AGENT
802-281-7126

MBR HOLDINGS, LLC

Beswick & Dewitt Drive Property

- 135 Beswick Drive
- Unit A - Kubricky
- Unit B - May Massage, LLC
- 210 Beswick, Premier Property Services
- 202 Beswick, Premier Property Services
- 100 Dewitt, Allard's Unfinished Furniture
- 124 Dewitt, Bergeron Service Center
- 162 Dewitt, TNT Stump Grinding & Property Maint.
- 180 Dewitt, AVAILABLE
- 201 Dewitt, Ste 1-5, Sabbeth Law
- 203 Dewitt, AVAILABLE, Entire Floor (5,600SF)

Service/Retail Tenants

GILMAN OFFICE CENTER (Holiday & Farmvu Drive)

- Angelina's Rose – 802-369-2984
- Fisher Auto Parts – 802-478-0750
- Grandstand Apparel – 802-281-6041
- Bello Salon – 802-359-3925
- Wild Roots Wellness & Spa – 802-359-3956

MBR HOLDINGS (Dewitt & Beswick Drive)

- Allards Unfinished Furniture – 802-295-2333
- Bergeron Service Center – 802-698-8415
- May Massage, LLC – 802-379-3231
- Premier Property Services – 603-727-1173
- Sabbeth Law – 802-457-1112
- TNTStump Grinding & Prop Maint – 603-381-8016



**5,600SF 203 Dewitt Dr. -- Available space
for customized reno on the lower level.
Take all or partial.**

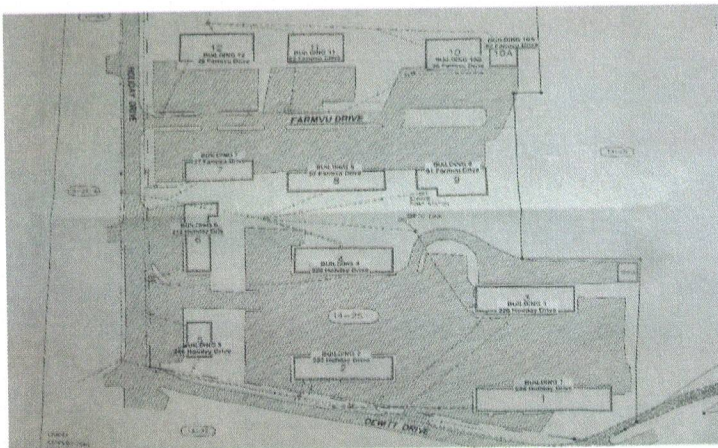
**AVAILABLE COMMERCIAL
OFFICE SPACE
802-281-7126**



***** GILMAN OFFICE CENTER *****

- Advance Transit Rider Kiosk
- USPS, UPS/FedEx Courier Service
- Tenant/Visitor Parking
- On-Site Property Mgmt/Maint
- Flexible Lease Terms
- Exit 11 off I-89 & I-91

- Robust Area Demographics
- Eateries/Aquatic Center/Lodging
- Auto Dealers/Gas/Garages/Car Wash
- Downtown WRJ Shops & Services
- Amtrack/Bus Station/Lebanon Airport
- Area Entertainment: Movie Theaters,
Live Theater, VINS, Montshire Museum,
Billings Farm, Pub Venues
- Dartmouth College/Medical Center



PROPERTY FOOTPRINT

PRIME LOCATION!!

**91 Farmvu Drive
Stand Alone Building 4,377SF
Exclusive Parking!!**

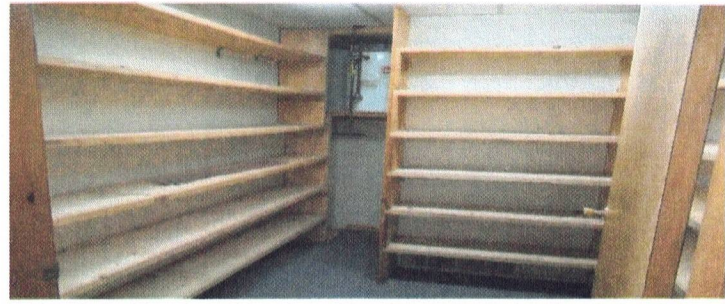
**Reception, Several offices, Large
Conference Room, Lunch/Break Room**



1,895SF Office Space Available

Bldg 4, 220 HD, Ste B

Self-Contained with dedicated Entry, ADA restroom, 6-7 Offices, Kitchenette, large shelved Supply Closet, Storage Room, potential File Room & sunlit Waiting Room off Large Reception Area.



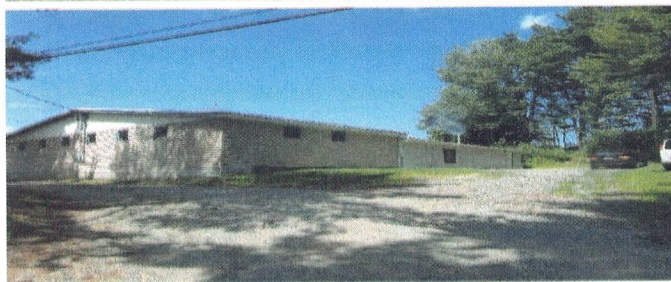
A RARE OPPORTUNITY

7,320SF I-C Zoned

180 Dewitt Drive

Can Be Split 5,520SF+1,800SF

A stand alone building suitable for a Manufacturing facility, a Mechanical business or a business needing Materials Supply/Inventory Storage. Much open space with natural light, two restrooms. Location is in close proximity to Exit 11, I-89 & I-91.



WELCOME ... HARTFORD SCHOOL DISTRICT CULINARY ARTS PROGRAM!!

KUDOS TO . . . Chef Patrick Gobielle, Assistant Jessica Williams and the 2024-2025 Junior & Senior HACTC participants. We are ecstatic to have the Café space being used and look forward to a soft opening to be announced after a settling in period.

The program is 100% student run and gives full exposure to ALL aspects of running a food establishment – inventory management, cooking, health/safety standards.

